



*California Music Educators Association
Central Coast Section*

www.ccsmusic.org



**2015 CCS HS Honor Band
Audition Scales and Excerpts**

Scales are to be recorded in order first, then record the excerpts.

Scales:

Flute and Oboe.....	Page 2
Bassoon and Bb/Eb Clar.	Page 3
Bass Clarinet and Saxophones	Page 4
Trumpet and French Horn.....	Page 5
Trombone and B. C. Euph.....	Page 6
Baritone T. C. and Tuba.....	Page 7
Percussion.....	Page 8

Excerpts:

Flute.....	Page 9
Oboe.....	Page 10
Bassoon	Page 11
Bb Clarinet.....	Page 12
Alto/Bass/Contra Clarinets	Page 13
Alto Saxophones.....	Page 14
Tenor and Baritone Sax.....	Page 15
Trumpet	Page 16
French Horn	Page 17
Trombone	Page 18
Euphonium B. C.	Page 19
Baritone T. C.....	Page 20
Tuba.....	Page 21
Percussion.....	Page 22

CCS High School Honor Band Audition Set B - Scales

Flute

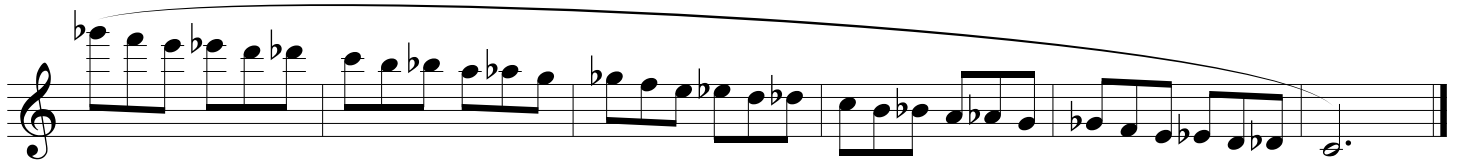
E \flat Major ♩ = 90



C Melodic Minor ♩ = 90

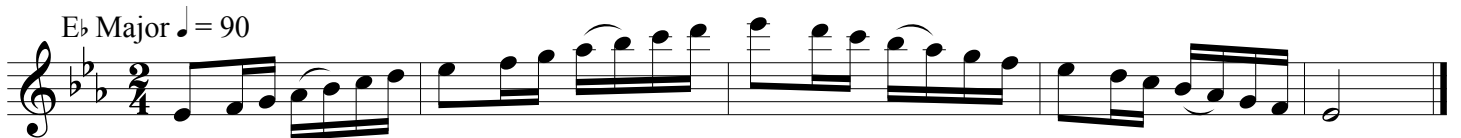


Chromatic ♩ = 90



Oboe

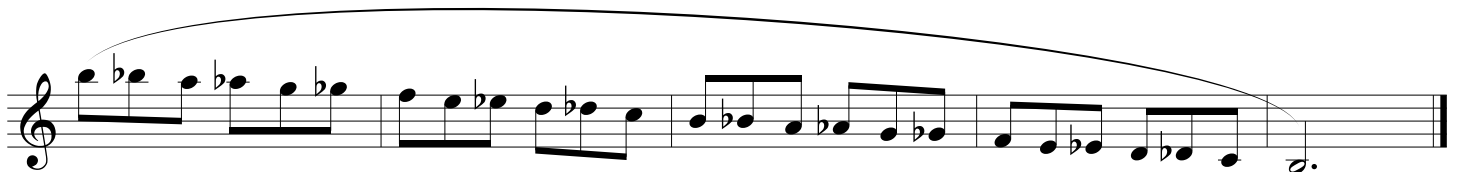
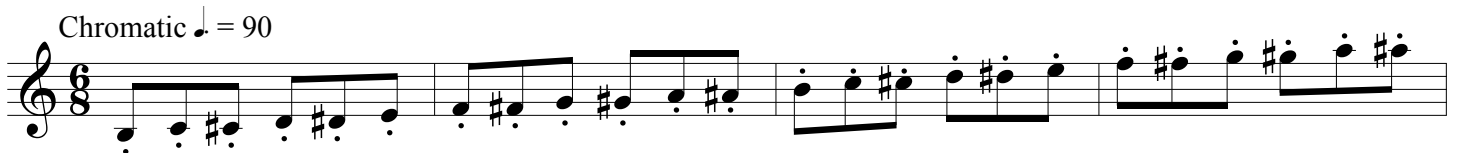
E \flat Major ♩ = 90



C Melodic Minor ♩ = 90



Chromatic ♩ = 90



CCS High School Honor Band Audition Set B - Scales

Bassoon

E \flat Major $\text{♩} = 90$

C Melodic Minor $\text{♩} = 90$

Chromatic $\text{♩} = 90$

B \flat /E \flat Clarinet

E \flat Major $\text{♩} = 90$

C Melodic Minor $\text{♩} = 90$

Chromatic $\text{♩} = 90$

CCS High School Honor Band Audition Set B - Scales

Bass Clarinet

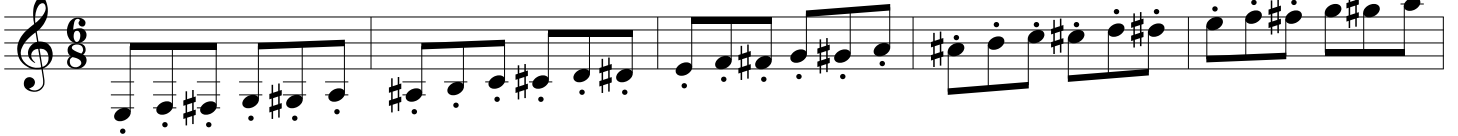
E \flat Major ♩ = 90



C Melodic Minor ♩ = 90



Chromatic ♩ = 90



Saxophones

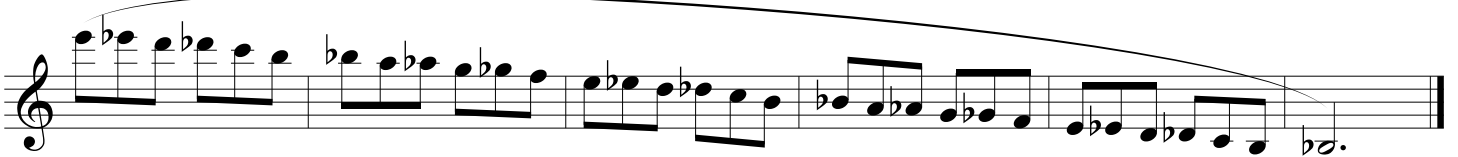
E \flat Major ♩ = 90



C Melodic Minor ♩ = 90



Chromatic ♩ = 90



CCS High School Honor Band Audition Set B - Scales

E♭ Major ♩ = 90 Trumpet

C Melodic Minor (1 or 2 octaves) ♩ = 90

Chromatic ♩ = 66

E♭ Major ♩ = 90 Horn

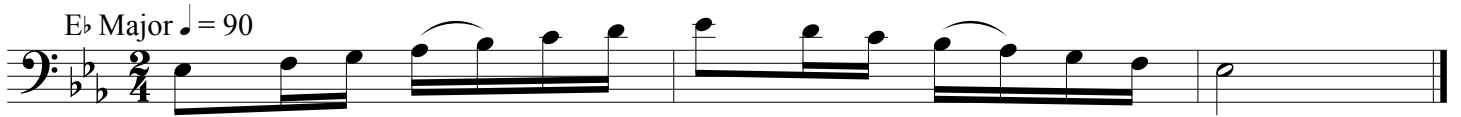
C Melodic Minor ♩ = 90

Chromatic ♩ = 90

CCS High School Honor Band Audition Set B - Scales

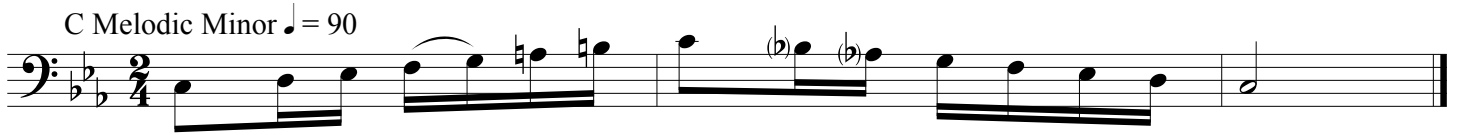
Trombone

E \flat Major ♩ = 90



Musical staff for Trombone, E \flat Major scale, 2/4 time signature. The scale is written in bass clef with a key signature of two flats (B \flat and E \flat). The tempo is marked as ♩ = 90. The scale consists of quarter notes: E \flat , F, G, A, B \flat , C, D, E \flat , followed by a whole note E \flat .

C Melodic Minor ♩ = 90



Musical staff for Trombone, C Melodic Minor scale, 2/4 time signature. The scale is written in bass clef with a key signature of two flats (B \flat and E \flat). The tempo is marked as ♩ = 90. The scale consists of quarter notes: C, D, E \flat , F, G, A, B \flat , C, followed by a whole note C.

Chromatic ♩ = 90



Musical staff for Trombone, Chromatic scale, 6/8 time signature. The scale is written in bass clef with a key signature of two flats (B \flat and E \flat). The tempo is marked as ♩ = 90. The scale consists of eighth notes: C, C \sharp , D, D \flat , E, E \flat , F, F \sharp , G, G \flat , A, A \sharp , B, B \flat , C, followed by a whole note C.

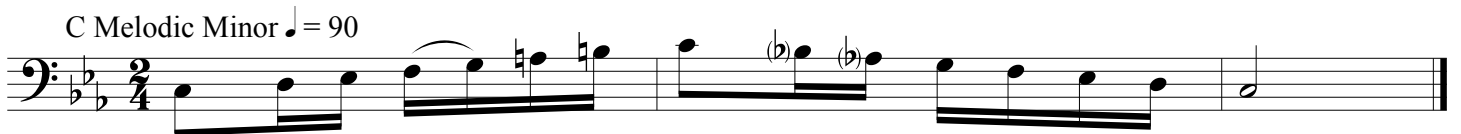
Euphonium

E \flat Major ♩ = 90



Musical staff for Euphonium, E \flat Major scale, 2/4 time signature. The scale is written in bass clef with a key signature of two flats (B \flat and E \flat). The tempo is marked as ♩ = 90. The scale consists of quarter notes: E \flat , F, G, A, B \flat , C, D, E \flat , followed by a whole note E \flat .

C Melodic Minor ♩ = 90



Musical staff for Euphonium, C Melodic Minor scale, 2/4 time signature. The scale is written in bass clef with a key signature of two flats (B \flat and E \flat). The tempo is marked as ♩ = 90. The scale consists of quarter notes: C, D, E \flat , F, G, A, B \flat , C, followed by a whole note C.

Chromatic ♩ = 90



Musical staff for Euphonium, Chromatic scale, 6/8 time signature. The scale is written in bass clef with a key signature of two flats (B \flat and E \flat). The tempo is marked as ♩ = 90. The scale consists of eighth notes: C, C \sharp , D, D \flat , E, E \flat , F, F \sharp , G, G \flat , A, A \sharp , B, B \flat , C, followed by a whole note C.

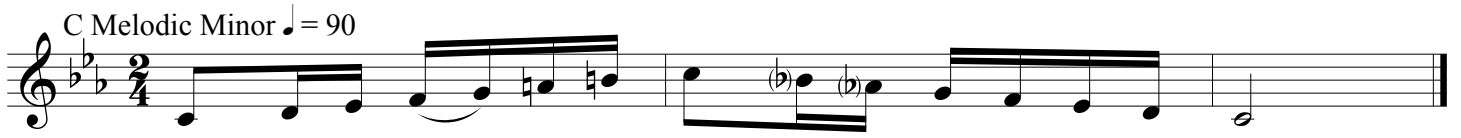
CCS High School Honor Band Audition Set B - Scales

Baritone T.C.

E♭ Major ♩ = 90



C Melodic Minor ♩ = 90



Chromatic ♩ = 90



Tuba

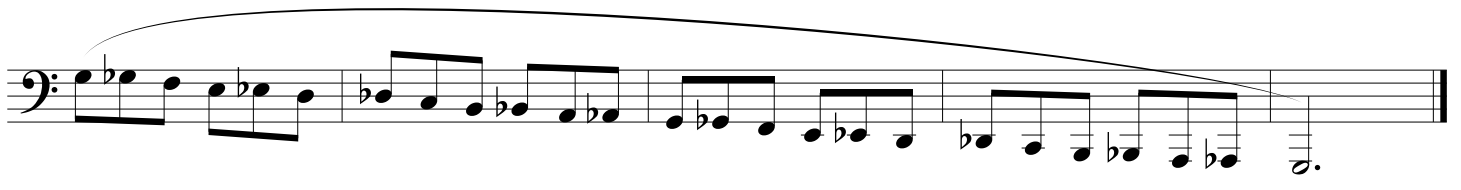
E♭ Major ♩ = 90



C Melodic Minor ♩ = 90



Chromatic ♩ = 90



CCS High School Honor Band Audition Set B - Scales

Percussion - Mallets

E \flat Major ♩ = 90

C Melodic Minor ♩ = 90

Chromatic ♩ = 90

CCS High School Honor Band Audition Set B - Flute

Andante Expressivo

#1 *mf*

mf *p*

mf

Allegro

mp

mf

#2 *f*

f *p*

f *dim.*

p *f* *p* *f*

♩. = 72

CCS High School Honor Band Audition Set B - Oboe

#1 *Allegro*
mf

Musical score for piece #1, Oboe part, Allegro tempo, 4/4 time signature, key of B-flat major. The score consists of six staves of music. The first staff begins with a treble clef, a key signature of one flat (B-flat), and a 4/4 time signature. The music is marked 'Allegro' and 'mf'. The piece features a variety of rhythmic patterns, including eighth and sixteenth notes, and rests. The key signature changes to two flats (B-flat and E-flat) in the third staff. The piece concludes with a double bar line.

#2 *Andante* ♩ = 72
p

Musical score for piece #2, Oboe part, Andante tempo, common time signature, key of B-flat major. The score consists of two staves of music. The first staff begins with a treble clef, a key signature of two flats (B-flat and E-flat), and a common time signature. The music is marked 'Andante' and 'p'. The piece features a variety of rhythmic patterns, including quarter and eighth notes, and rests. The key signature changes to one flat (B-flat) in the second staff. The piece concludes with a double bar line.

CCS High School Honor Band Audition Set B - Bassoon

Andante

espressivo

p

f *espress.*

3

The Andante section consists of five staves of music in bass clef, 4/4 time, with a key signature of one flat. The first staff begins with a dynamic of *espressivo*. The second staff has a dynamic of *p*. The third staff features a triplet of eighth notes. The fourth staff has a dynamic of *f* and is marked *espress.*. The section concludes with a 3/4 time signature change.

Allegro Scherzando

p

f

f

p

cresc.

f

Fine

The Allegro Scherzando section consists of six staves of music in bass clef, 3/4 time, with a key signature of one flat. The first staff begins with a dynamic of *p*. The second staff has a dynamic of *f*. The third staff has a dynamic of *f*. The fourth staff has a dynamic of *p*. The fifth staff has a dynamic of *cresc.*. The sixth staff has a dynamic of *f* and ends with a double bar line and the word *Fine*.

CCS High School Honor Band Audition Set B - B \flat Clarinet

#1 *Adagio*

p

fz *pp*

#2 *Allegro*

tr *p*

tr *f*

CCS High School Honor Band Audition Set B -
Alto/Bass/Contrabass Clarinet

#1 *Andante Sustainuto*

f

#2 *Andantino*

mp

CCS High School Honor Band Audition Set B - Alto Sax

#1 Presto
mf sempre scherzando *p*

Musical score for piece #1, Alto Sax, Presto. It consists of four staves of music in 2/4 time with a key signature of one sharp (F#). The first staff starts with a treble clef and a key signature of one sharp. The music is characterized by rapid sixteenth-note passages and slurs. The dynamic markings are mezzo-forte (*mf*) and piano (*p*). The tempo is marked Presto. The piece concludes with a fermata on the final note of the fourth staff.

#2 Andante Cantabile ♩ = 54
p espressivo

Musical score for piece #2, Alto Sax, Andante Cantabile. It consists of four staves of music in 6/8 time with a key signature of three flats (Bb, Eb, Ab). The tempo is marked Andante Cantabile with a metronome marking of ♩ = 54. The music features long, flowing lines with slurs and accents. The dynamic marking is piano (*p*) and the style is espressivo. The piece concludes with a fermata on the final note of the fourth staff.

CCS High School Honor Band Audition Set B - Tenor/Bari Sax

Andante ♩ = 88

#1

p *p* *pp* *fz* *pp* *p*

Poco allegro

#2

mf *p* *cresc.* *f* *mf* *cresc.* *rit.*

CCS High School Honor Band Audition Set B - Trumpet

Andante moderato ♩ = 68
espressivo

#1 *p*

Allegro

#2 *f*

CCS High School Honor Band Audition Set B - Horn

Andante (In 4)

#1

p

sf

p

Andante

#2

p

cresc.

p

cresc.

f

CCS High School Honor Band Audition Set B - Trombone

Andante con moto

#1

p dolce

p

p

p

p

dolce

f rit.

Allegro Moderato

#2

mf

CCS High School Honor Band Audition Set B - Euphonium

Moderato

#1

f

mp

mf

f

mf

Strict Rhythm

p

f

Moderato

#2

f

CCS High School Honor Band Audition Set B - Baritone T.C.

Moderato

#1

f *mp* *mf* *f* *mf* *p* *f*

Moderato

#2

f

CCS High School Honor Band Audition Set B - Tuba

Adagio

#1

mf

Allegro

#2

f *p*

cresc.

CCS High School Honor Band Audition Set B - Percussion

Snare Drum

Allegro

#1 2/4 ||:  ||

pp

f *pp* *mf* *cresc.*

ff

pp *ff*

Bells

Allegro

#2 C  *mf*

Timpani

Moderato

#3 12/8  *f*