

C.C.S. Jr. High/Middle School Honor Orchestra

Violin Audition Sheet

MS Set C

1. Record scales and excerpts in the order they appear on this sheet.
2. There should be no verbal comments on the recording.
3. Tempo indications and excerpt bowings are suggested markings and may be adjusted according to ability.
4. Follow the guidelines for online submission.

C Major Scale

♩=100

G Major Scale

♩=100

F Major Scale -- Include this scale if you would like to be considered for 1st Violin.

♩=100

Little Fugue in g minor

J.S. Bach

♩=78

f

Include this excerpt if you would like to be considered for 1st Violin.

Serenade for Strings, Finale

Tchaikovsky

♩=108

p *mf* *f*

C.C.S. Jr. High/Middle School Honor Orchestra

Viola Audition Sheet

MS Set C

1. Record scales and excerpts in the order they appear on this sheet.
2. There should be no verbal comments on the recording.
3. Tempo indications and excerpt bowings are suggested markings and may be adjusted according to ability.
4. Follow the guidelines for online submission.

C Major Scale

$\text{♩} = 100$

G Major Scale

$\text{♩} = 100$

F Major Scale (Optional)

$\text{♩} = 100$

Concerto Madrigalesco Op. 11 No. 10

Vivaldi

Andante $\text{♩} = 63$

mp *alla corda* (on the string)

Frollicsome Finale, Simple Symphony

Britten

Prestissimo $\text{♩} = 136$

f cantabile *sf*

C.C.S. Jr. High/Middle School Honor Orchestra

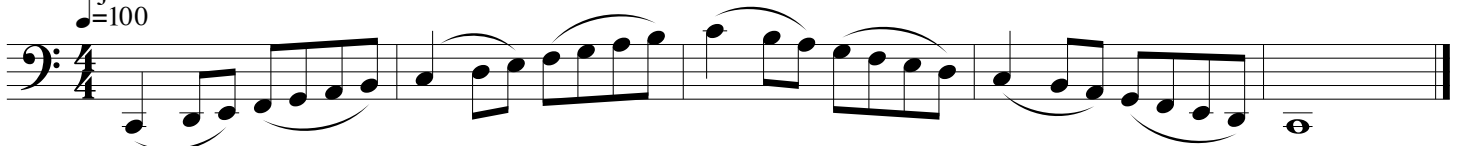
Cello Audition Sheet

MS Set C

1. Record scales and excerpts in the order they appear on this sheet.
2. There should be no verbal comments on the recording.
3. Tempo indications and excerpt bowings are suggested markings and may be adjusted according to ability.
4. Follow the guidelines for online submission.

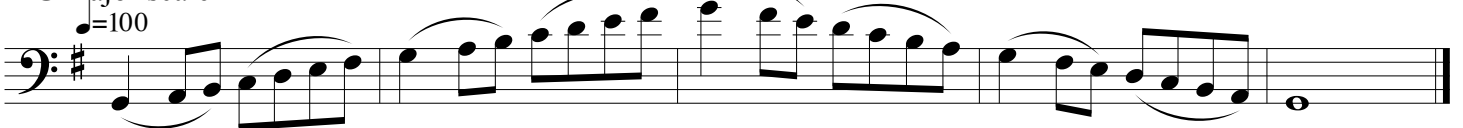
C major scale

$\text{♩} = 100$



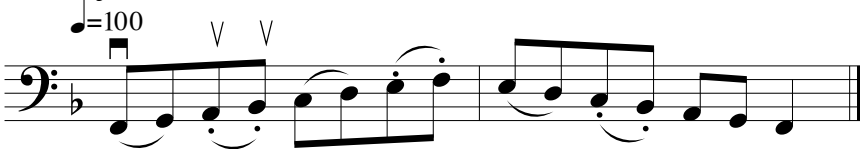
G major scale

$\text{♩} = 100$



F major scale

$\text{♩} = 100$



Symphony No. 8

Schubert

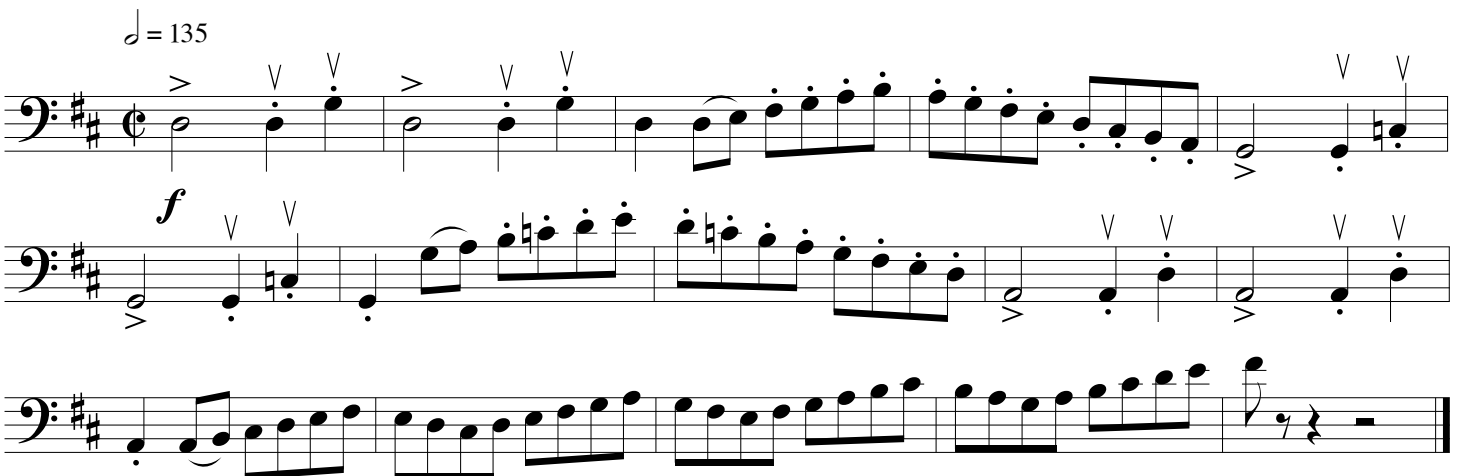
$\text{♩} = 106$



Overture "Russlan and Ludmila"

M. Glinka

$\text{♩} = 135$



C.C.S. Jr. High/Middle School Honor Orchestra

Bass Audition Sheet

MC Set C

1. Record scales and excerpts in the order they appear on this sheet.
2. There should be no verbal comments on the recording.
3. Tempo indications and excerpt bowings are suggested markings and may be adjusted according to ability.
4. Follow the guidelines for online submission.

C Major Scale

$\text{♩}=80$



G Major Scale

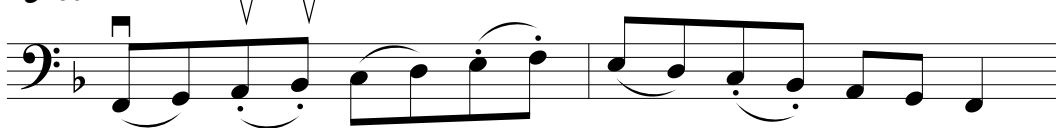
$\text{♩}=80$

pizz.



F Major Scale

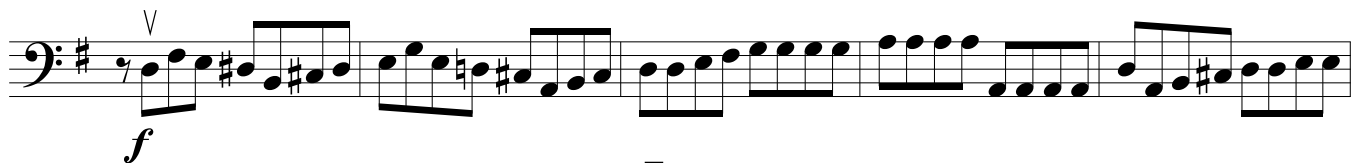
$\text{♩}=80$



Eine Kleine Nachtmusic

Allegro $\text{♩}=120$

Mozart



Symphony No. 6

Allegro ma non troppo $\text{♩}=66$

Beethoven

