

CMEA-CCS MS Honor Band

Audition Music - Set A

1. Record scales and excerpts in the order on the sheet.
2. Do not make any verbal comments on your recording.
3. Check your recording before submitting it to your teacher.

Flute

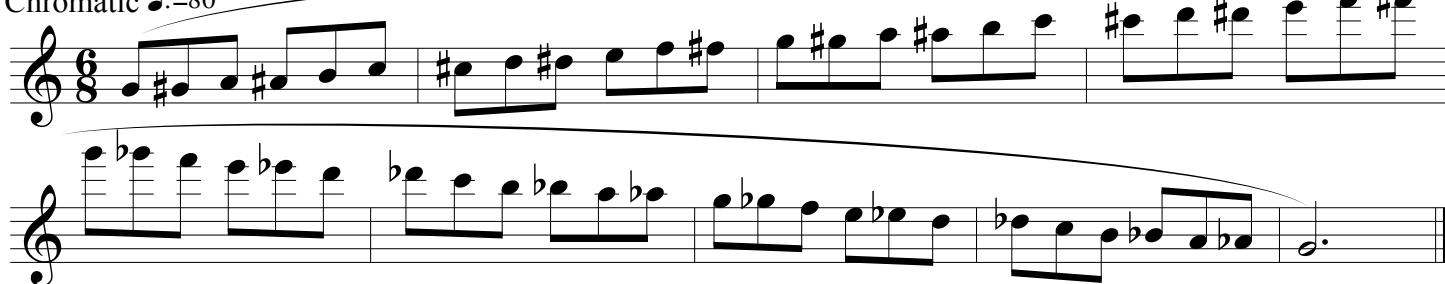
D Major ♩=80



F Major ♩=80



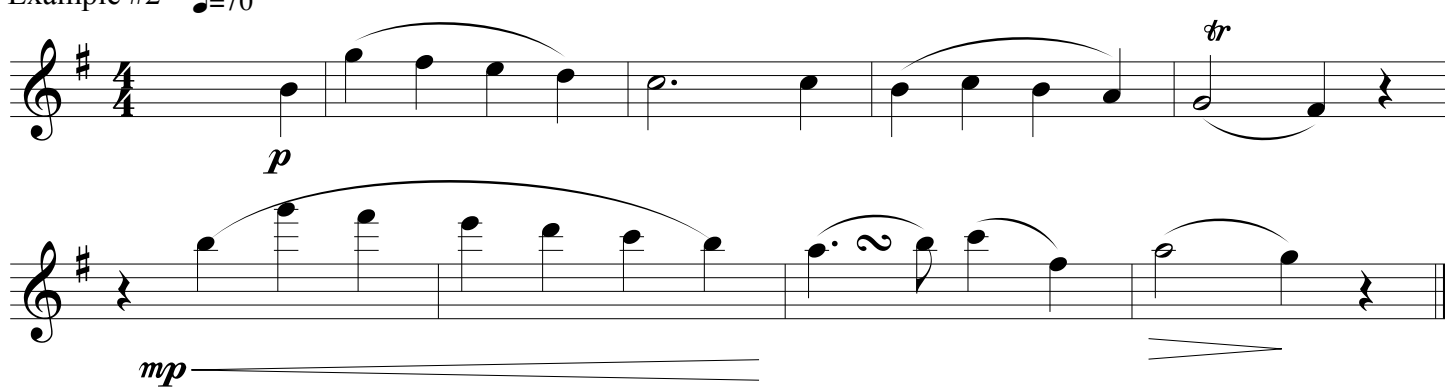
Chromatic ♩=80



Example #1 ♩=100



Example #2 ♩=70



CMEA-CCS MS Honor Band

Audition Music - Set A

1. Record scales and excerpts in the order on the sheet.
2. Do not make any verbal comments on your recording.
3. Check your recording before submitting it to your teacher.

Oboe

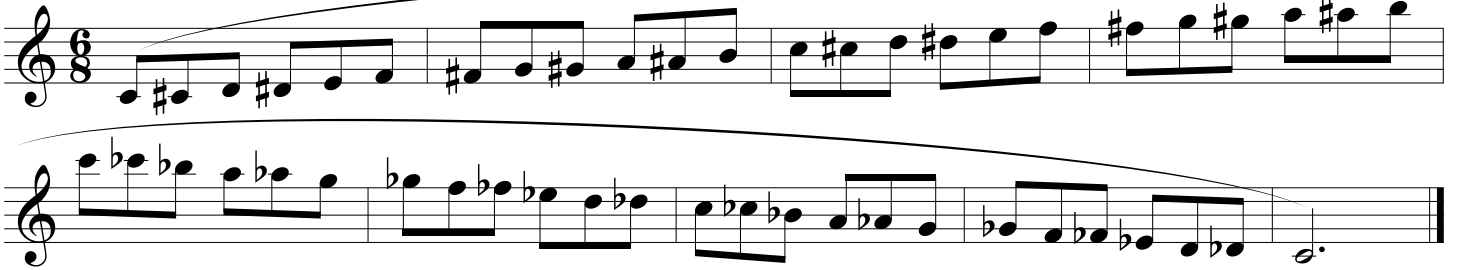
Bb Major ♩=80



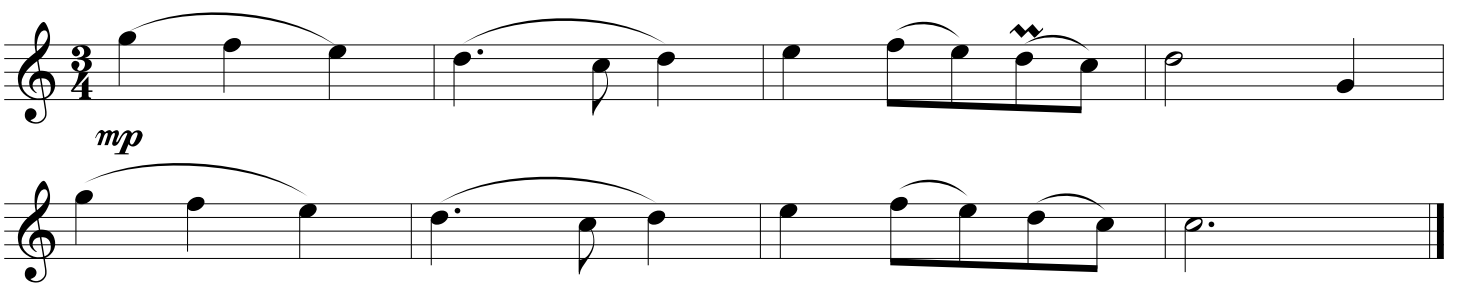
D Major ♩=80



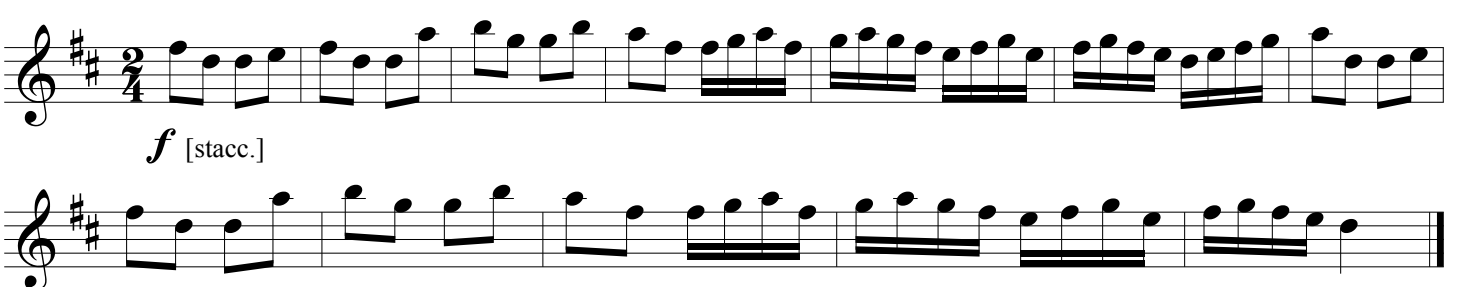
Chromatic ♩=80



Example #1 ♩=65



Example #2 ♩=90



CMEA-CCS MS Honor Band

Audition Music - Set A

1. Record scales and excerpts in the order on the sheet.
2. Do not make any verbal comments on your recording.
3. Check your recording before submitting it to your teacher.

Clarinet

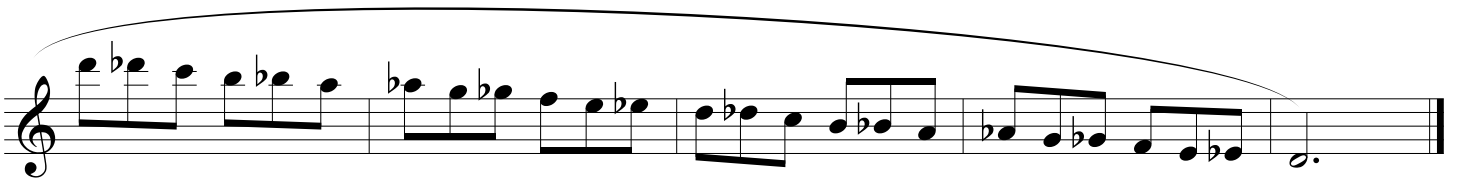
Ab Major ♩=110



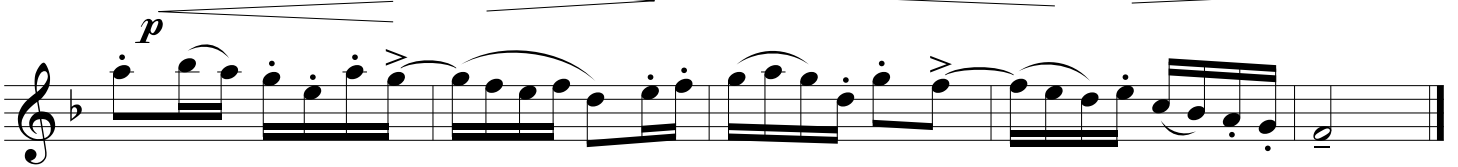
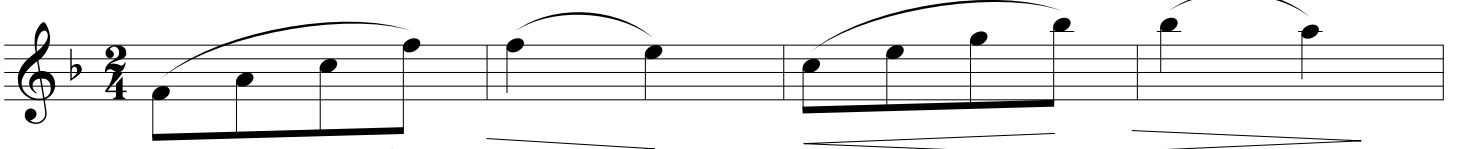
C Major ♩=110



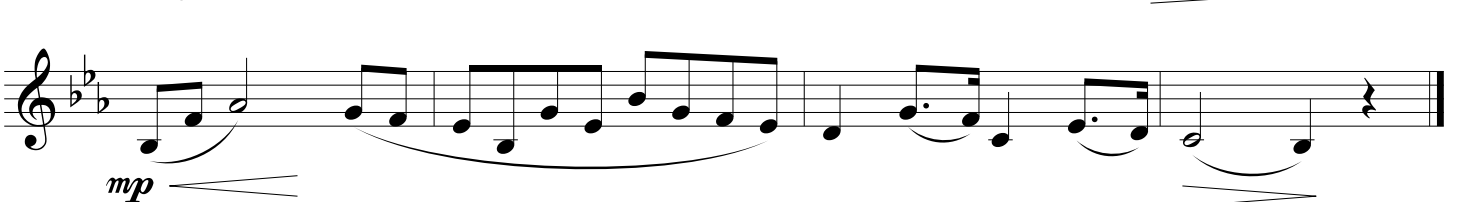
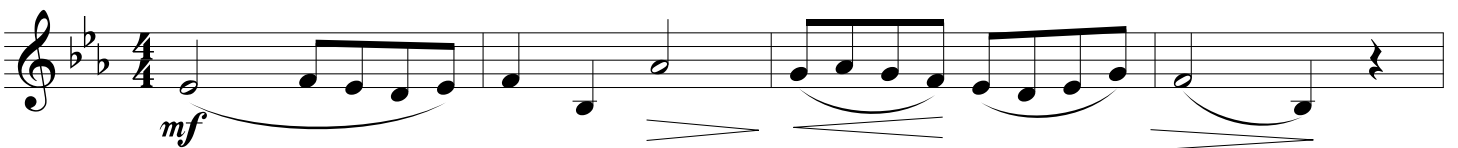
Chromatic ♩=80



Example #1 ♩=110



Example #2 ♩=85



CMEA-CCS MS Honor Band

Audition Music - Set A

1. Record scales and excerpts in the order on the sheet.
2. Do not make any verbal comments on your recording.
3. Check your recording before submitting it to your teacher.

Bass Clarinet

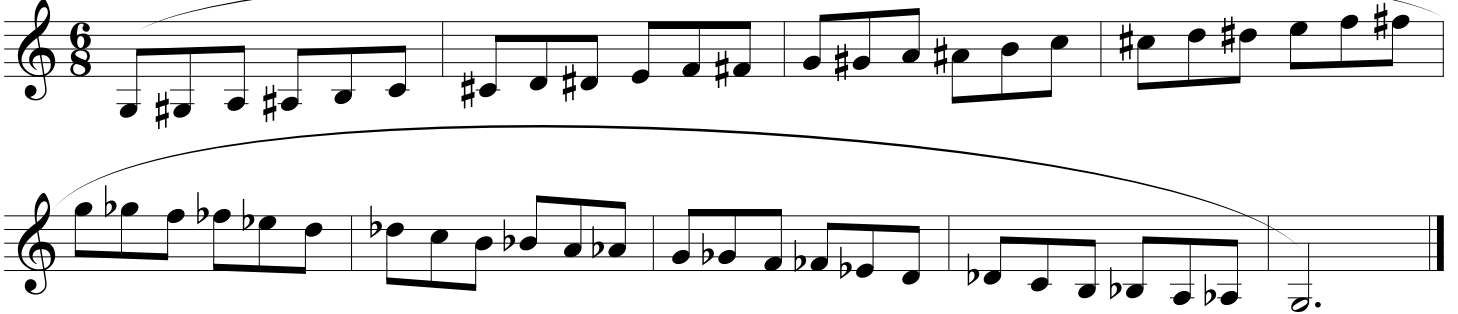
D Major ♩=80



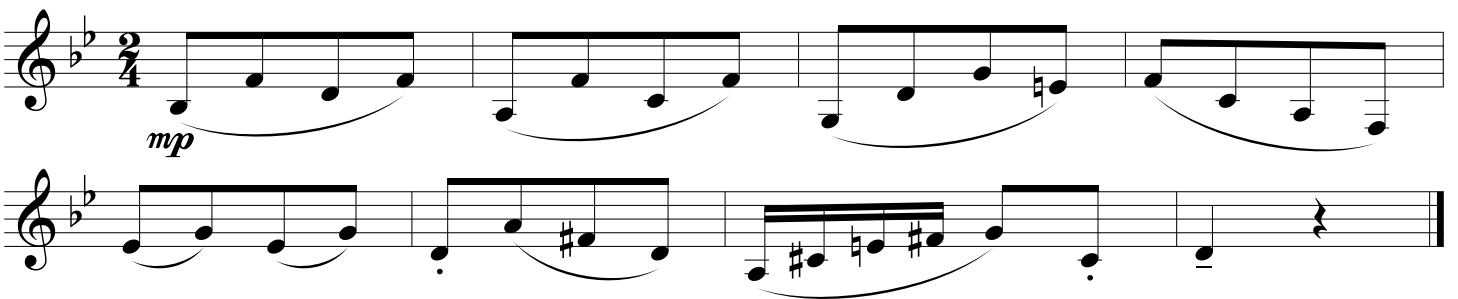
Bb Major ♩=80



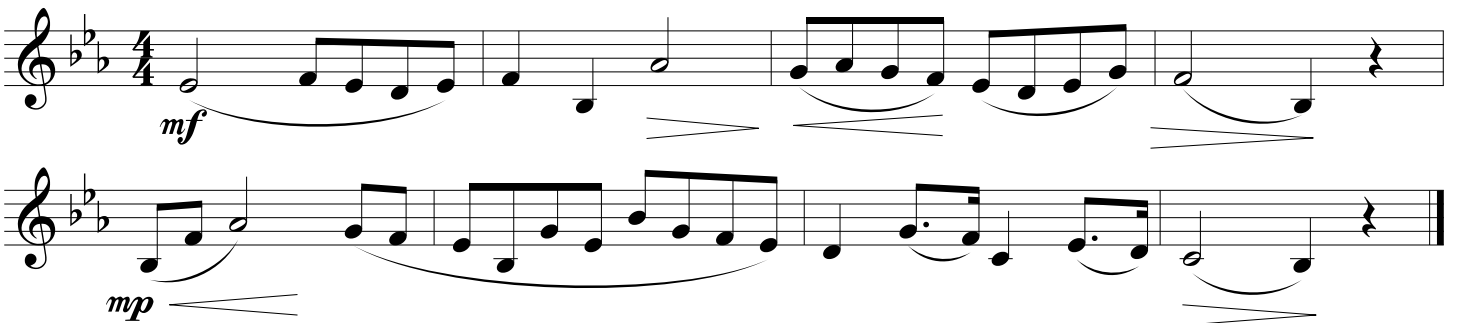
Chromatic ♩=80



Example #1 ♩=95



Example #2 ♩=85



CMEA-CCS MS Honor Band

Audition Music - Set A

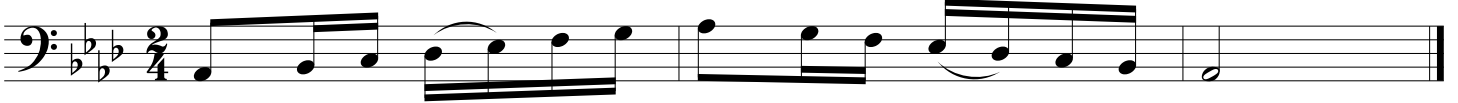
1. Record scales and excerpts in the order on the sheet.
2. Do not make any verbal comments on your recording.
3. Check your recording before submitting it to your teacher.

Bassoon

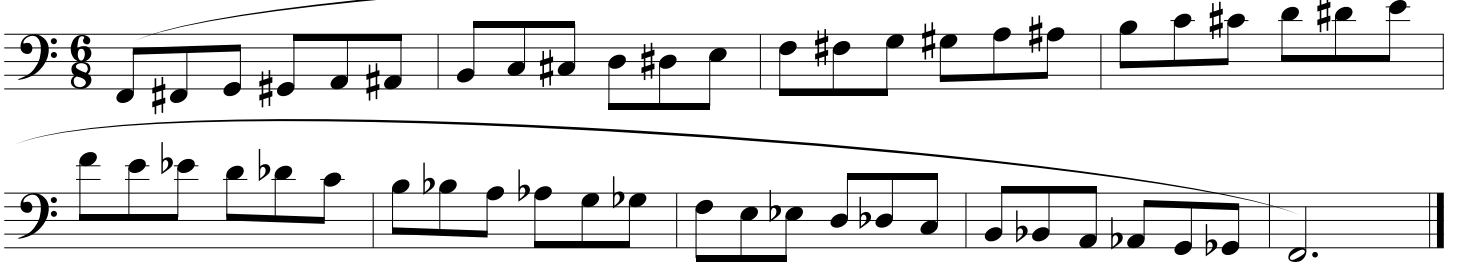
C Major ♩=80



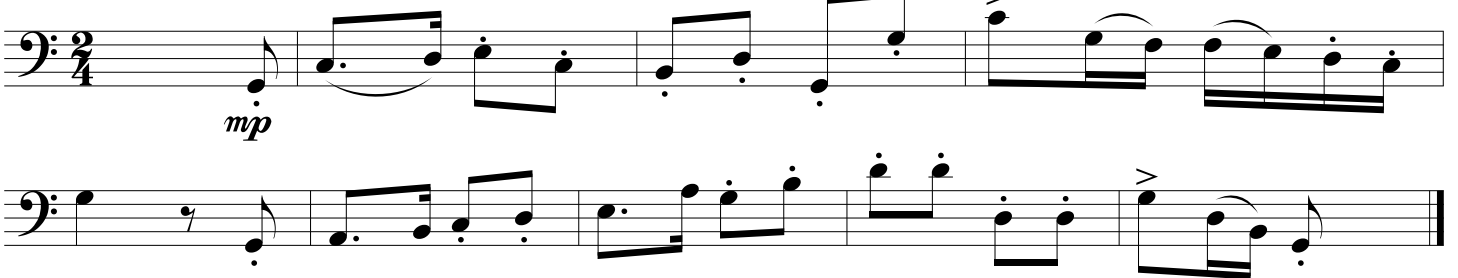
Ab Major ♩=80



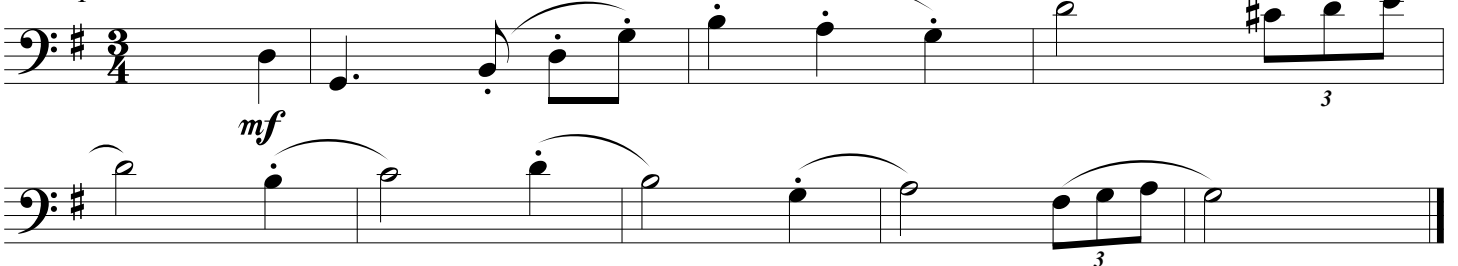
Chromatic ♩=80



Example #1 ♩=75



Example #2 ♩=95



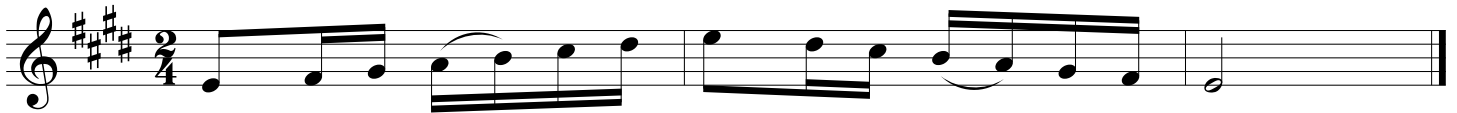
CMEA-CCS MS Honor Band

Audition Music - Set A

1. Record scales and excerpts in the order on the sheet.
2. Do not make any verbal comments on your recording.
3. Check your recording before submitting it to your teacher.

Alto Saxophone

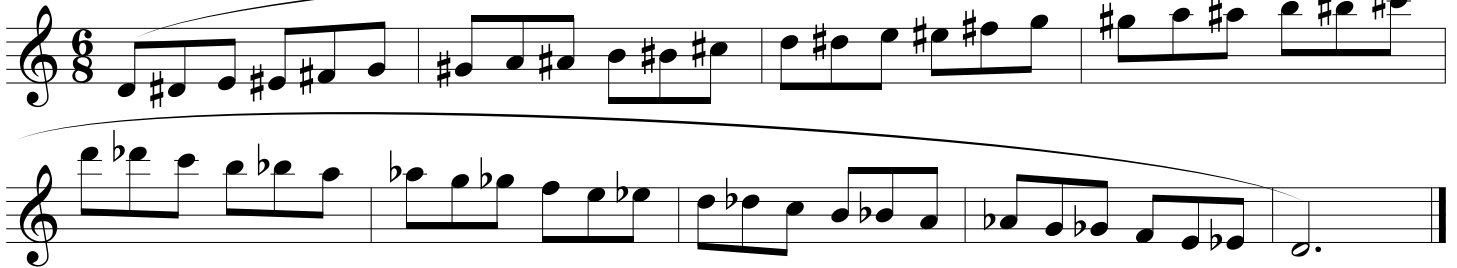
E Major ♩=80



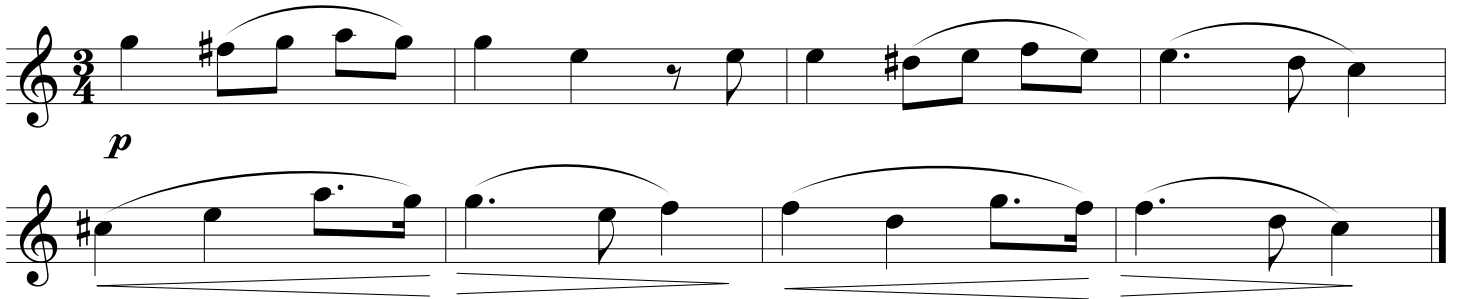
C Major ♩=80



Chromatic ♩=80



Example #1 ♩=100



Example #2 ♩=120



CMEA-CCS MS Honor Band

Audition Music - Set A

1. Record scales and excerpts in the order on the sheet.
2. Do not make any verbal comments on your recording.
3. Check your recording before submitting it to your teacher.

Tenor Saxophone

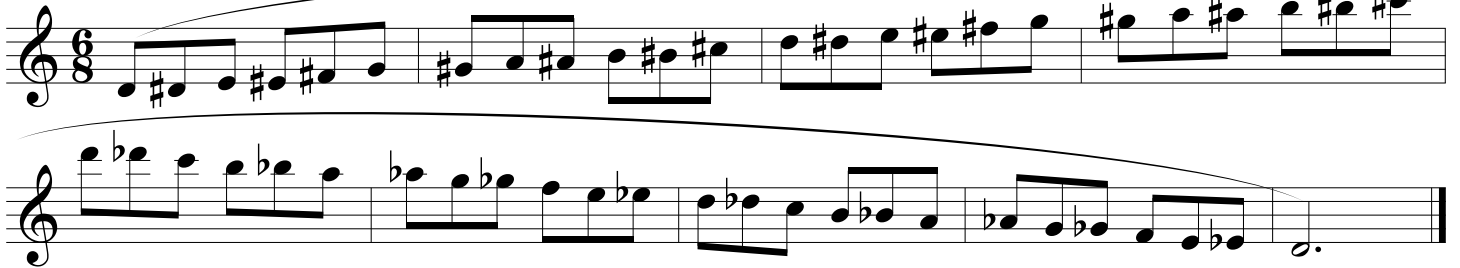
E Major ♩=80



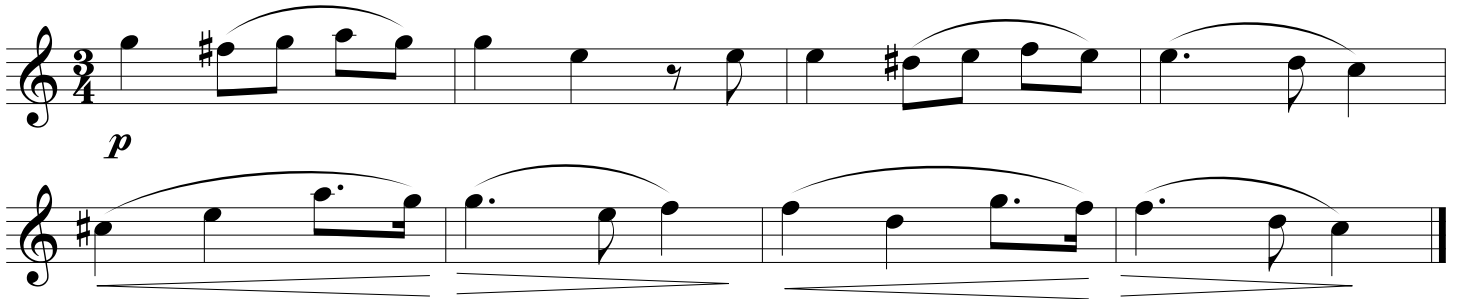
C Major ♩=80



Chromatic ♩.=80



Example #1 ♩=100



Example #2 ♩=120



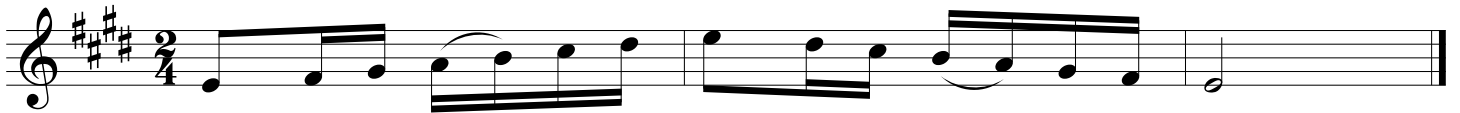
CMEA-CCS MS Honor Band

Audition Music - Set A

1. Record scales and excerpts in the order on the sheet.
2. Do not make any verbal comments on your recording.
3. Check your recording before submitting it to your teacher.

Baritone Saxophone

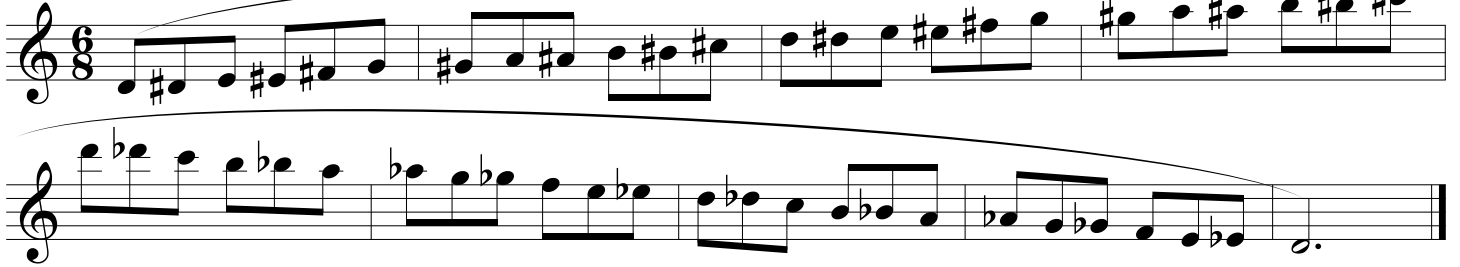
E Major ♩=80



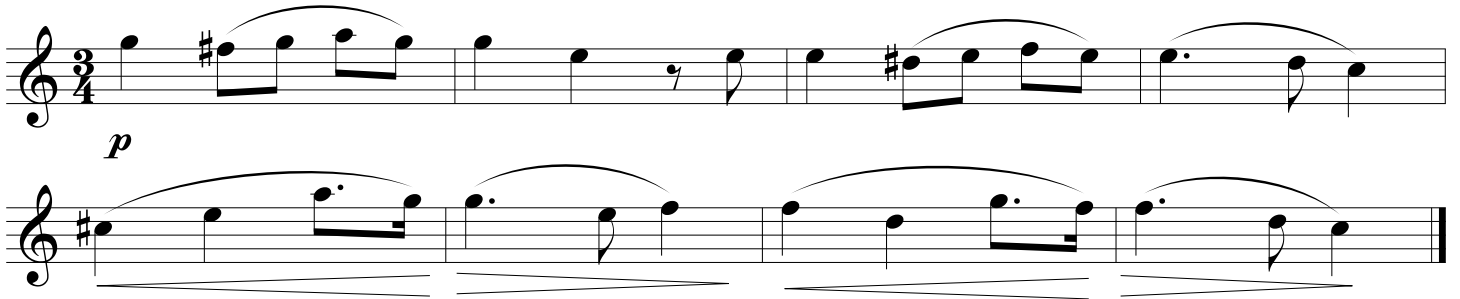
C Major ♩=80



Chromatic ♩.=80



Example #1 ♩=100



Example #2 ♩=120



CMEA-CCS MS Honor Band

Audition Music - Set A

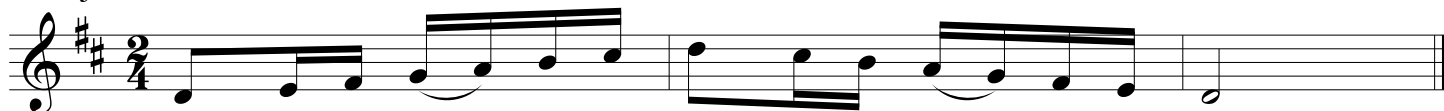
1. Record scales and excerpts in the order on the sheet.
2. Do not make any verbal comments on your recording.
3. Check your recording before submitting it to your teacher.

French Horn

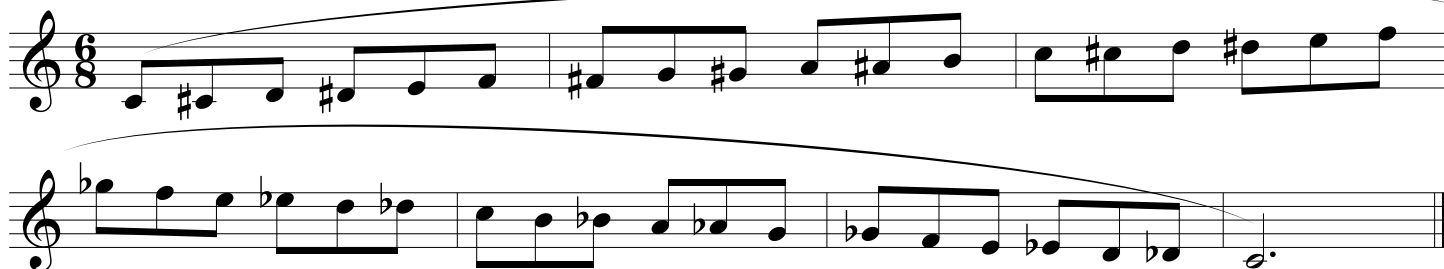
F Major ♩=80



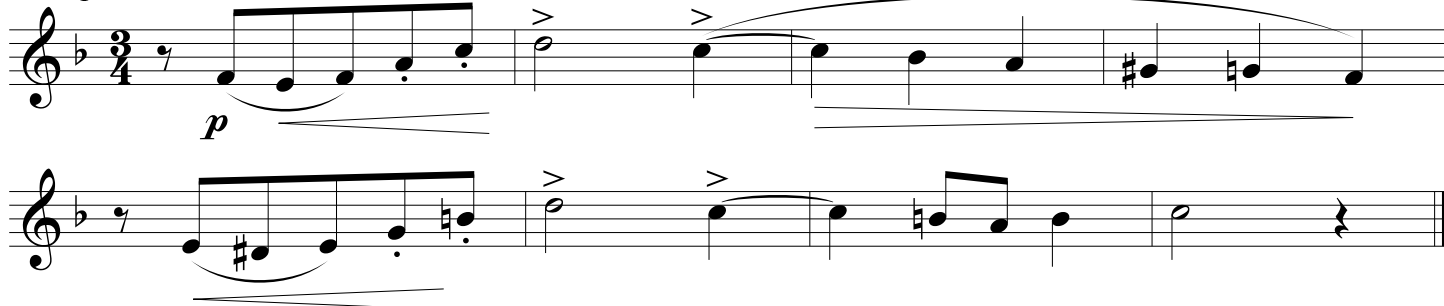
D Major ♩=80



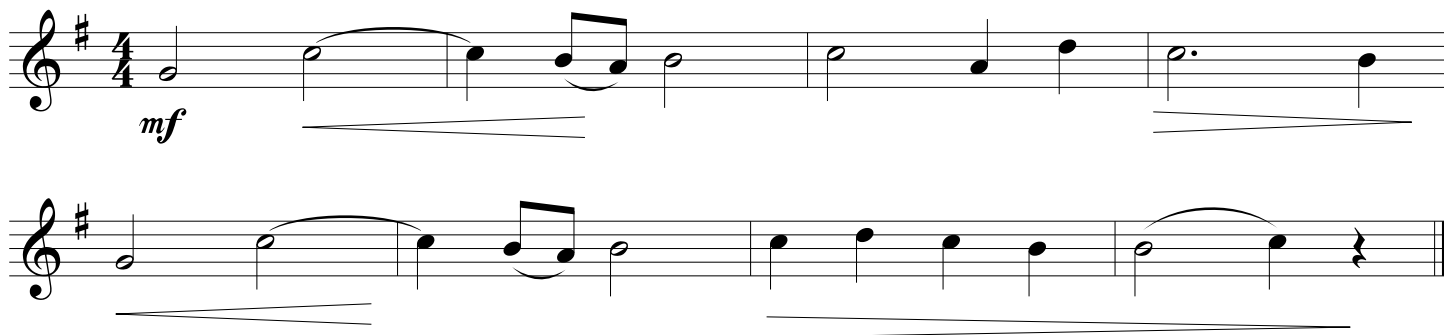
Chromatic ♩=80



Example #1 ♩=105



Example #2 ♩=82



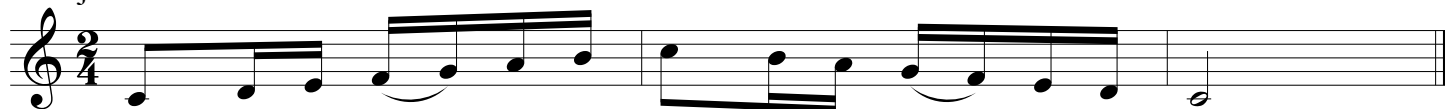
CMEA-CCS MS Honor Band

Audition Music - Set A

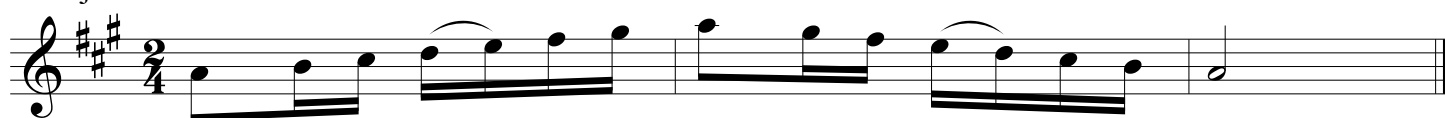
1. Record scales and excerpts in the order on the sheet.
2. Do not make any verbal comments on your recording.
3. Check your recording before submitting it to your teacher.

Trumpet

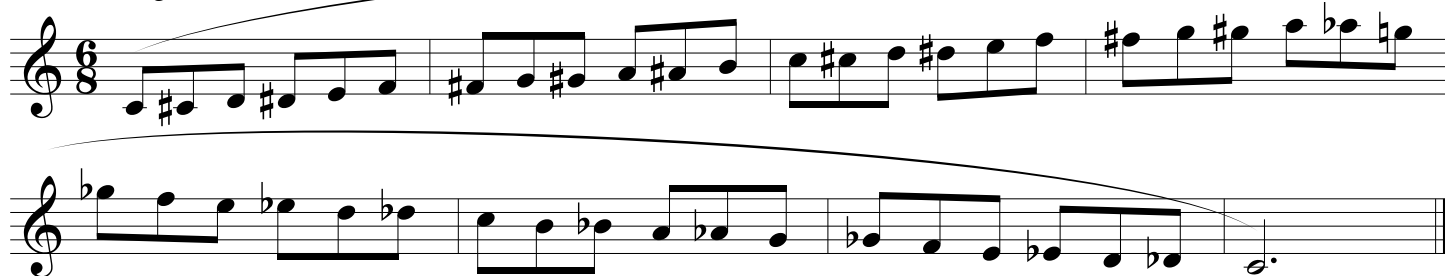
C Major ♩=80



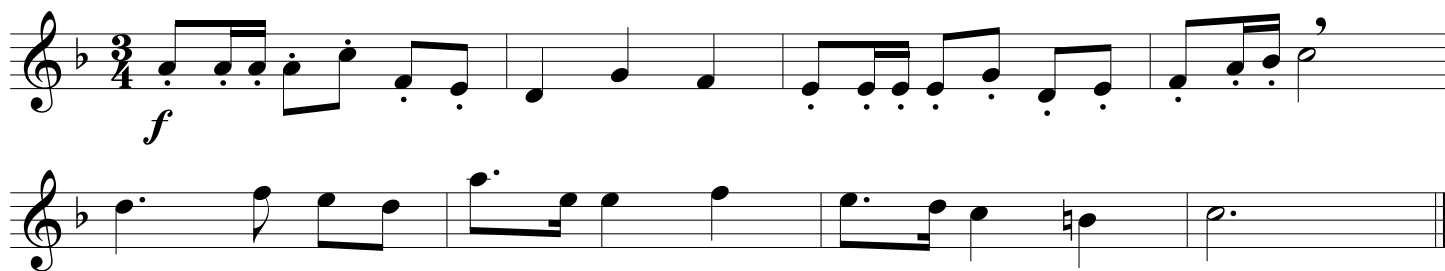
A Major ♩=80



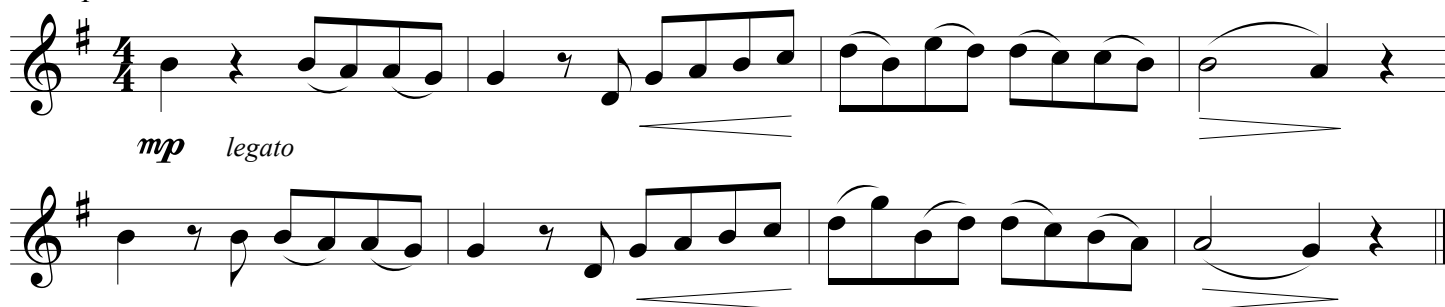
Chromatic ♩=80



Example #1 ♩=120



Example #2 ♩=58



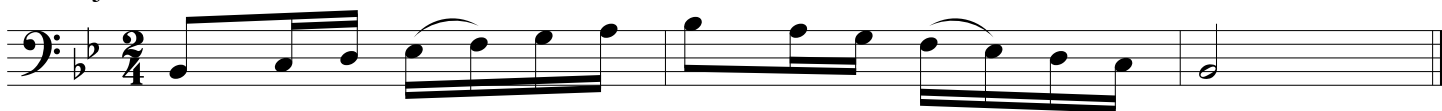
CMEA-CCS MS Honor Band

Audition Music - Set A

1. Record scales and excerpts in the order on the sheet.
2. Do not make any verbal comments on your recording.
3. Check your recording before submitting it to your teacher.

Trombone

Bb Major ♩=80



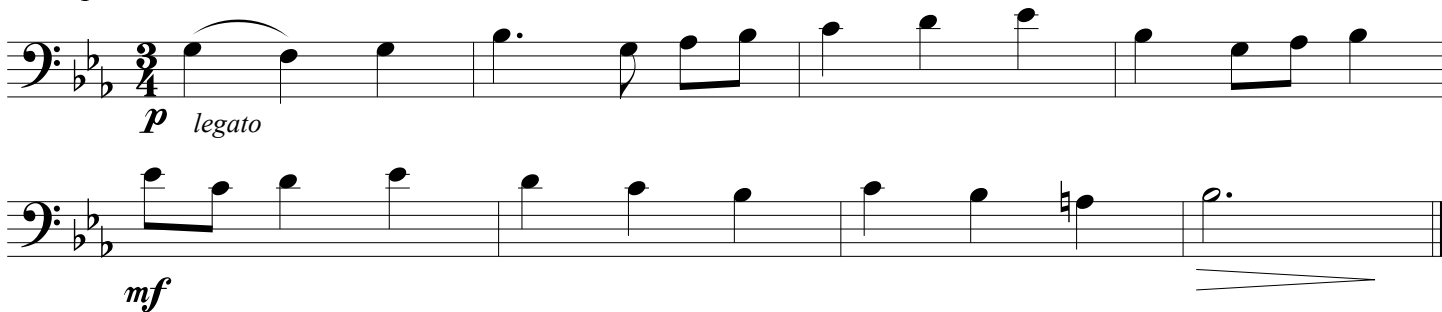
G Major ♩=80



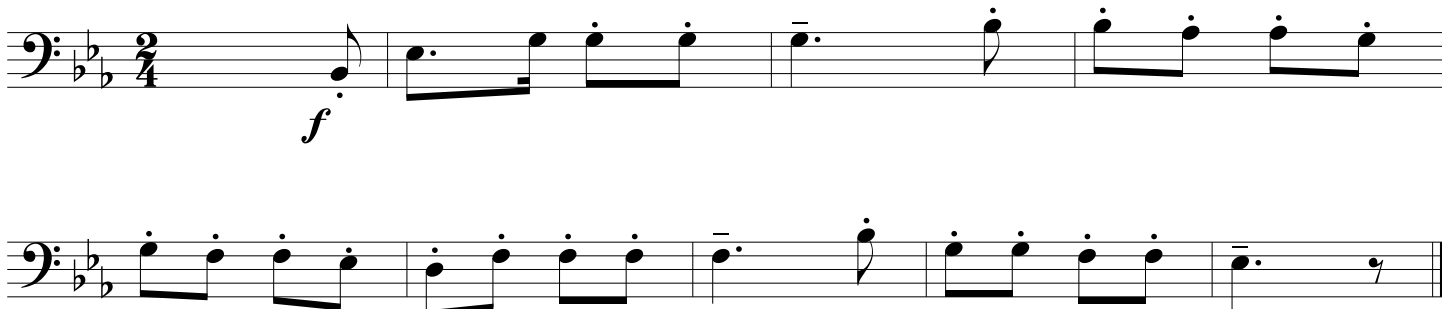
Chromatic ♩=80



Example #1 ♩=65



Example #2 ♩=120



CMEA-CCS MS Honor Band

Audition Music - Set A

1. Record scales and excerpts in the order on the sheet.
2. Do not make any verbal comments on your recording.
3. Check your recording before submitting it to your teacher.

Baritone (B.C.)

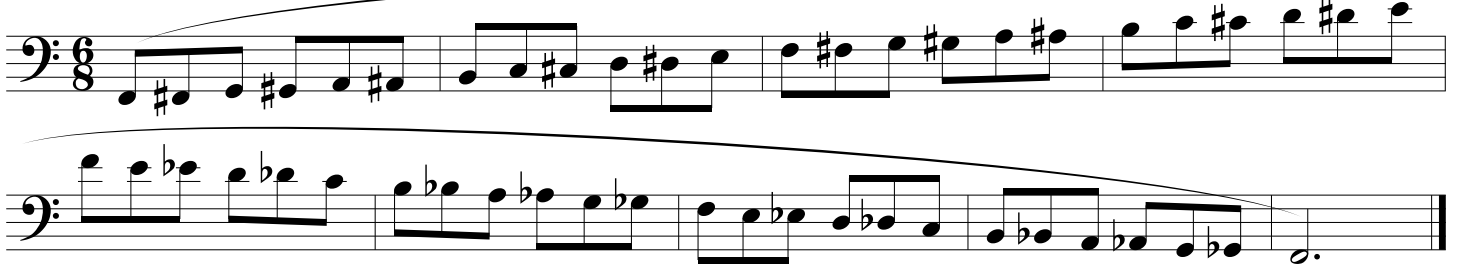
Bb Major ♩=80



G Major ♩=80



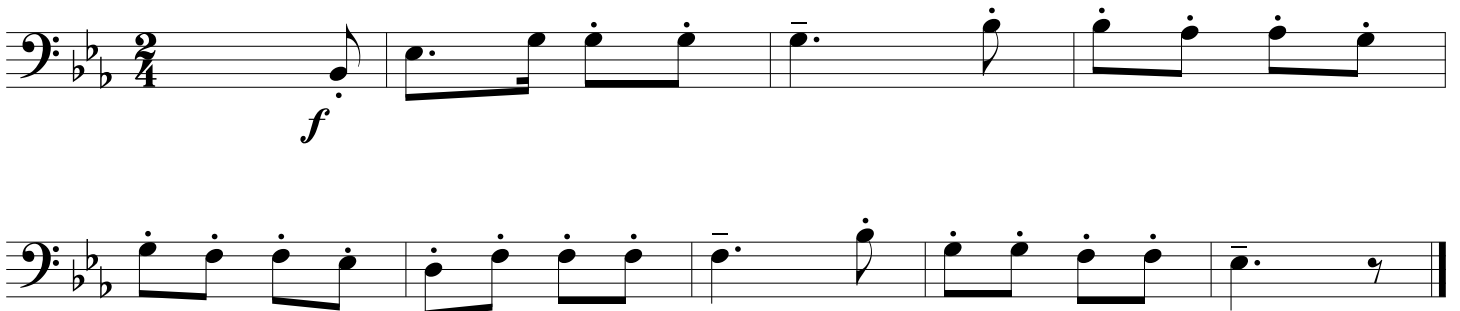
Chromatic ♩=80



Example #1 ♩=65



Example #2 ♩=120



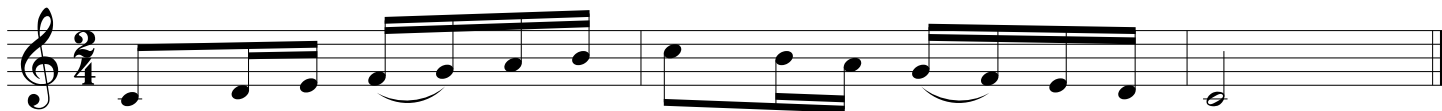
CMEA-CCS MS Honor Band

Audition Music - Set A

1. Record scales and excerpts in the order on the sheet.
2. Do not make any verbal comments on your recording.
3. Check your recording before submitting it to your teacher.

Baritone (T.C.)

C Major (Concert Bb) ♩=80



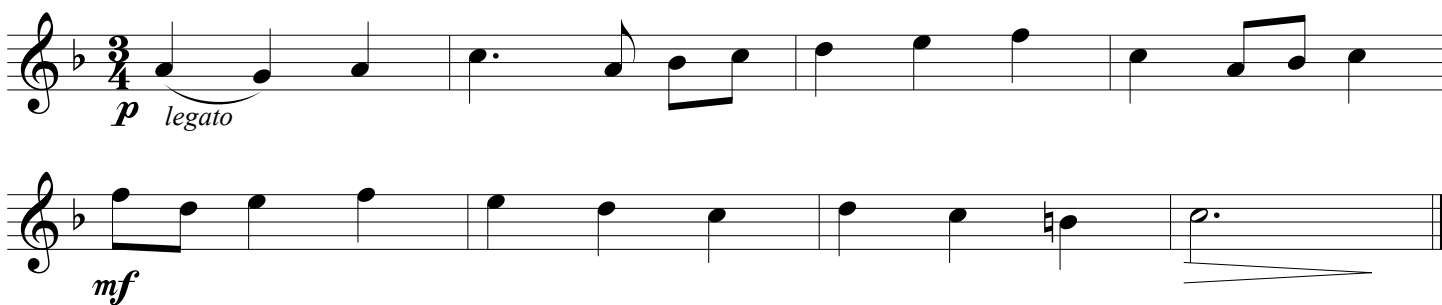
A Major (Concert G) ♩=80



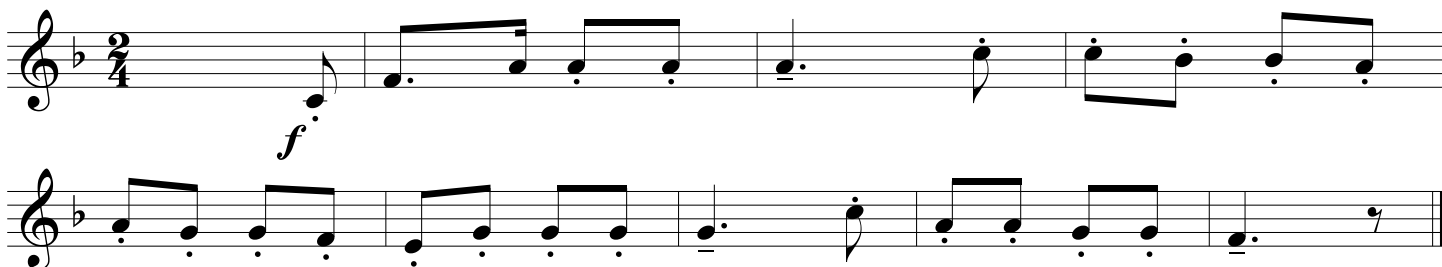
Chromatic ♩=80



Example #1 ♩=65



Example #2 ♩=120



PLEASE LISTEN TO YOUR RECORDINGS BEFORE SUBMITTING

CMEA-CCS MS Honor Band

Audition Music - Set A

1. Record scales and excerpts in the order on the sheet.
2. Do not make any verbal comments on your recording.
3. Check your recording before submitting it to your teacher.

Tuba

Eb Major ♩=80



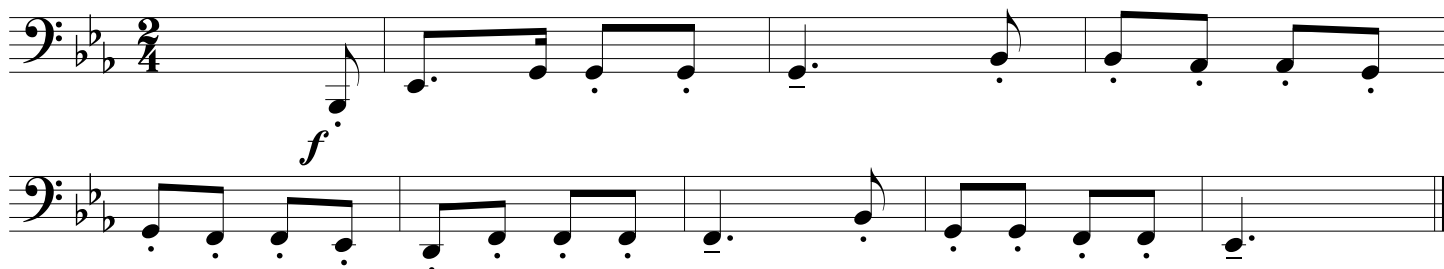
A Major ♩=80



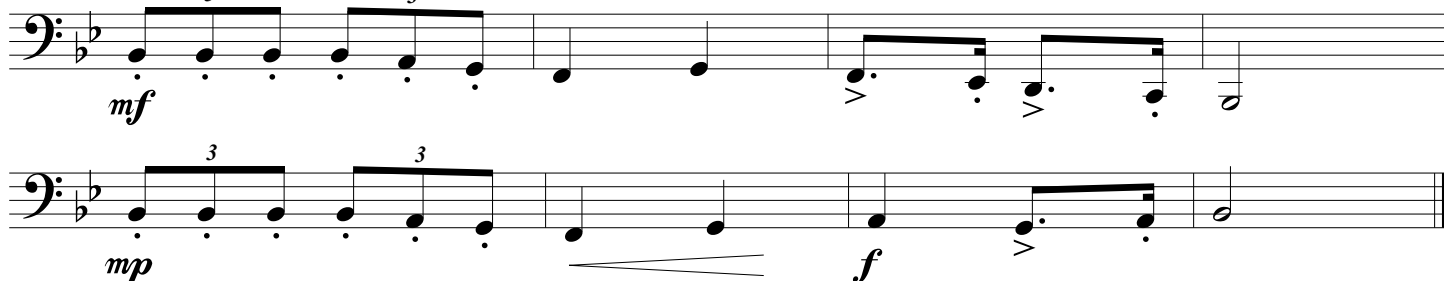
Chromatic ♩=80



Example #1 ♩=120



Example #2 ♩=95

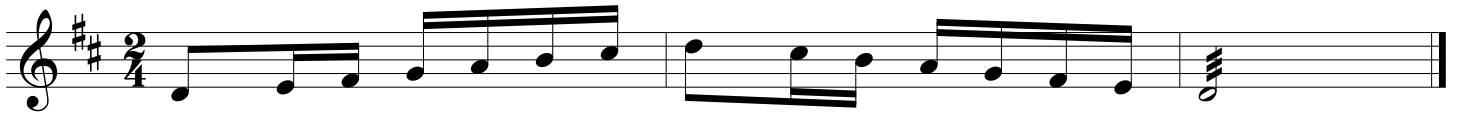


CMEA-CCS MS Honor Band Audition Music - Set A

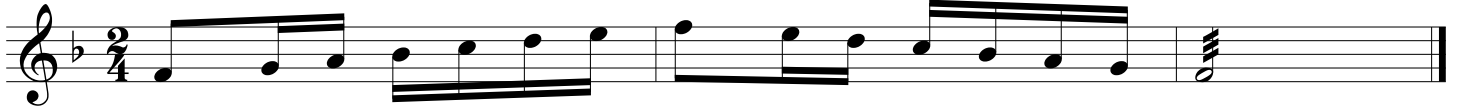
1. Record scales and excerpts in the order on the sheet.
2. Do not make any verbal comments on your recording.
3. Check your recording before submitting it to your teacher.

Mallets

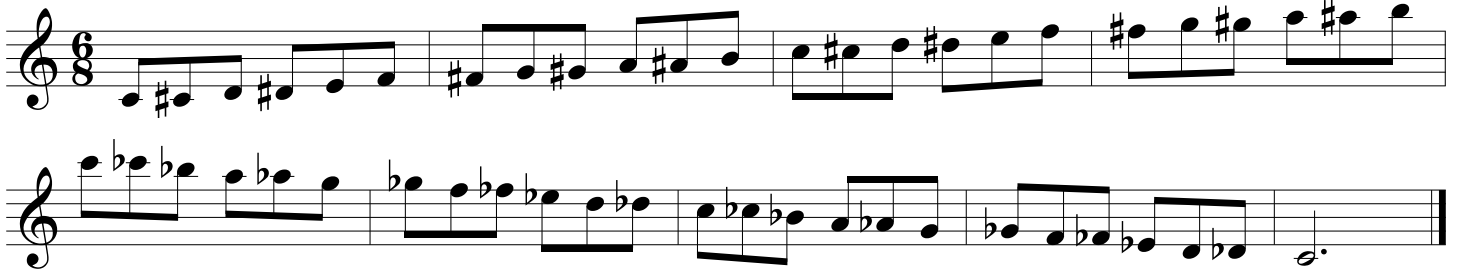
D Major ♩=80



F Major ♩=80



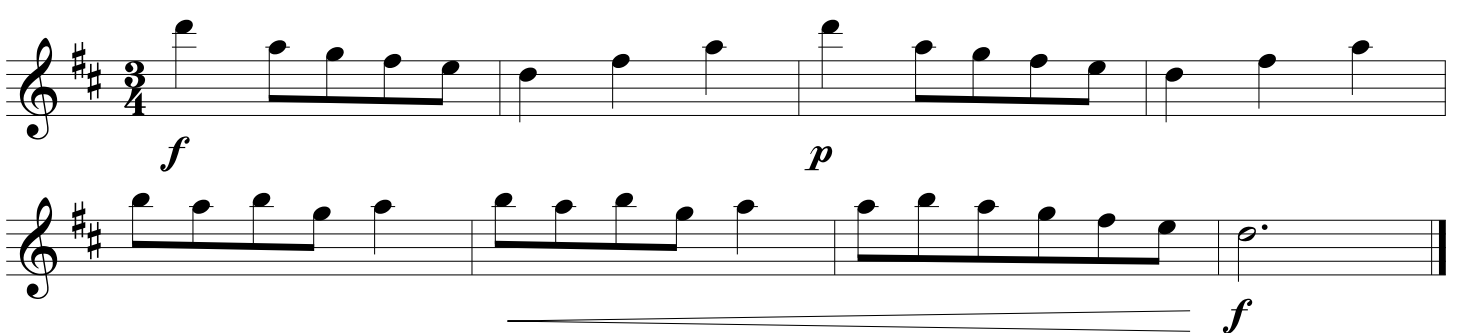
Chromatic ♩=80



Example #1 ♩=65



Example #2 ♩=115



CMEA-CCS MS Honor Band Audition Music - Set A

1. Record scales and excerpts in the order on the sheet.
2. Do not make any verbal comments on your recording.
3. Check your recording before submitting it to your teacher.

Students auditioning for percussion must perform all four excerpts to be considered

Percussion

Example #1 - Snare Drum ♩=100

Musical notation for Example #1 - Snare Drum, 4/4 time, tempo 100. The piece consists of two staves. The first staff starts with a dynamic of *mf* and ends with a dynamic of *p*. The second staff starts with a dynamic of *mf*.

Example #2 - Snare Drum ♩=90

Musical notation for Example #2 - Snare Drum, 2/4 time, tempo 90. The piece consists of two staves. The first staff starts with a dynamic of *f* and has accents (>) over several notes. The second staff also has accents (>) over several notes.

Example #3 - Snare Drum ♩=60

Musical notation for Example #3 - Snare Drum, 2/4 time, tempo 60. The piece consists of one staff with a dynamic of *p* at the beginning, *f* in the middle, and *p* at the end.

Example #4 - Timpani (Bb,F) ♩=110

Musical notation for Example #4 - Timpani (Bb,F), 2/4 time, tempo 110. The piece consists of two staves. The first staff starts with a dynamic of *f* and ends with a dynamic of *mp*. The second staff starts with a dynamic of *f*.

Example #5 - Timpani (Bb) ♩=60

Musical notation for Example #5 - Timpani (Bb), 2/4 time, tempo 60. The piece consists of one staff with a dynamic of *p* at the beginning, *f* in the middle, and *p* at the end.